

# LUX HOTELS



be lux, be unique

## **Brochura de Reuniões e Eventos**

*Brochure of  
Meetings & Events*



[fatima.luxhotels.pt](http://fatima.luxhotels.pt)



[fatimapark.luxhotels.pt](http://fatimapark.luxhotels.pt)



**Reuniões e Eventos  
que não se  
esquecem**

*Unforgettable  
Meeting  
Experiences*





### **Localização privilegiada, eventos multidisciplinares**

O Hotel Lux Fátima Park e Hotel Lux Fátima, encontram-se numa localização privilegiada pois estão em pleno centro de Portugal, o que facilita os encontros ou reuniões que juntam público dos mais diversos pontos do país. O aeroporto de Lisboa, situa-se a apenas 1 hora de distância e o do Porto a 1 hora e meia. Fátima é servida pela principal autoestrada do país A1 e tem uma rede de transportes rodoviários com ligações diárias para as principais cidades.

Porque não juntar ao seu evento uma atividade pedestre, um passeio a cavalo e de BTT, pelo maravilhoso Parque Natural das Serras de Aire e Candeeiros? Ou um workshop de nutrição e uma aula de yoga?

Atividades que aliadas à modernidade das nossas cinco salas ajustáveis e à flexibilidade da nossa equipa irão contribuir decerto para a concretização de eventos emocionais e enriquecedores que perdurarão na memória dos seus clientes, parceiros ou colaboradores.

### **Prime location, multidisciplinary events**

*Hotel Lux Fátima Park and Hotel Lux Fátima are in a privileged location because it is in the center of Portugal, which facilitates meetings or gatherings that bring together the public from across the country. Lisbon Airport, is only 1 hour away and Porto 1 hour and a half. Fatima is served by the country's main highway A1 and has public transport with daily connections to major cities.*

*Why not add to your event a pedestrian activity, a horse riding and mountain biking, through the beautiful Natural Park of Serras de Aire e Candeeiros? Or a nutrition workshop and a yoga class?*

*Activities that combined with our five modern adjustable rooms and the flexibility of our staff will certainly contribute to the realization of emotional and enriching events that will last in the memory of your customers, partners or employees.*

**Dispomos de cinco salas de reuniões ajustáveis, com comodidades modernas, wifi de alta velocidade e ar-condicionado. Queremos concretizar as suas reuniões e eventos com todo o conforto, numa atmosfera calma e produtiva como a da região de Fátima.**

*We have five adjustable meeting rooms with modern amenities, high speed wifi and air conditioning.*

*We want to carry out your meetings and events in comfort, in a calm and productive atmosphere like the one of the Fatima region.*




Sala / Meeting Room


# Auditório 1


 Dimensões / Dimensions  
comp / length 14,58 m x larg / width 10,90 m

 M2 / Sqm  
158,92

 Plateia / Theater  
132

 Escola / School  
80

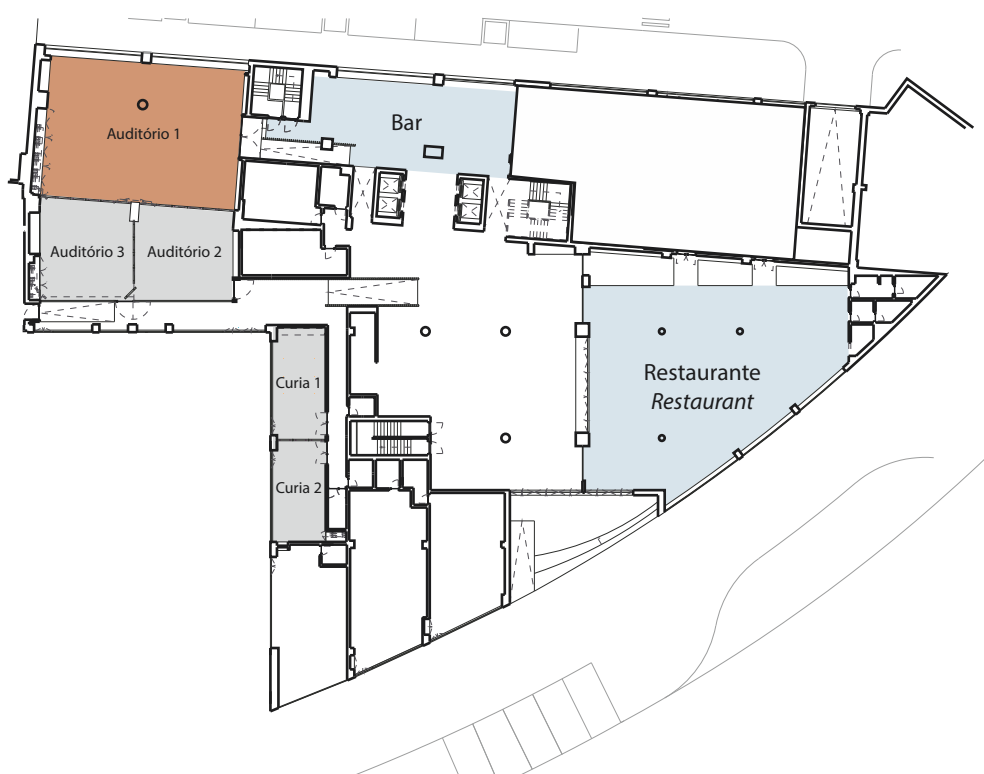
 Boardroom  
50

 Mesa U / U shape  
40

 Cabaret  
70

 Set Menu  
80

Piso / Floor 1



**Acessos / Accesses**

Nº de portas / *Nº of Doors* **1**

Altura da porta / *Door height* **2 m**

Largura da porta / *Door width* **3 m**

**Internet**

Internet Wireless

**Ligações elétricas / *Electrical connections***

Voltagem / *Voltage* **230**

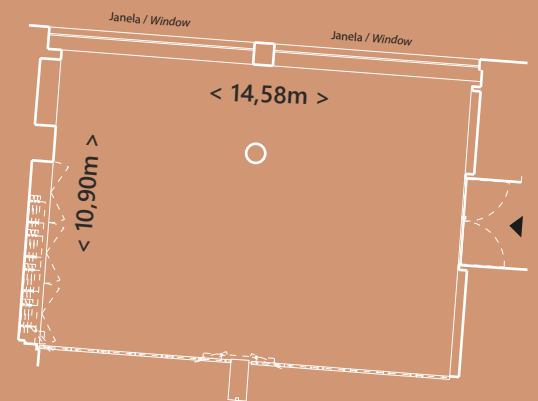
Amperes / *Amps* **16**

**Climatização e Iluminação / *Climatization and lightning system***

Ar condicionado / *Air conditioning*

Luz natural / *Natural light*

Blackout



Sala / Meeting Room


# Auditório 2


 Dimensões / Dimensions  
comp / length 7,20 m x larg / width 7,50 m

 M2 / Sqm  
51,03

 Plateia / Theater  
40

 Escola / School  
20

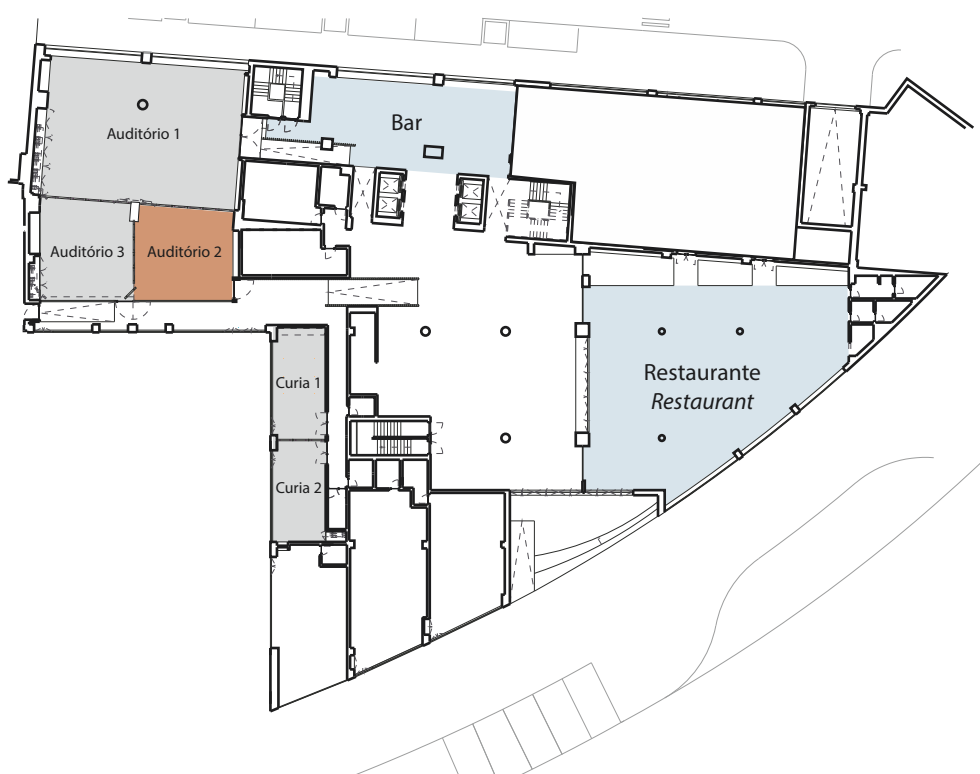
 Boardroom  
18

 Mesa U / U shape  
12

 Cabaret  
25

 Set Menu  
40

## Piso / Floor 1





**Acessos / Accesses**

Nº de portas / *Nº of Doors* **1**

Altura da porta / *Door height* **2 m**

Largura da porta / *Door width* **1,4 m**

**Internet**

Internet Wireless

**Ligações elétricas / *Electrical connections***

Voltagem / *Voltage* **230**

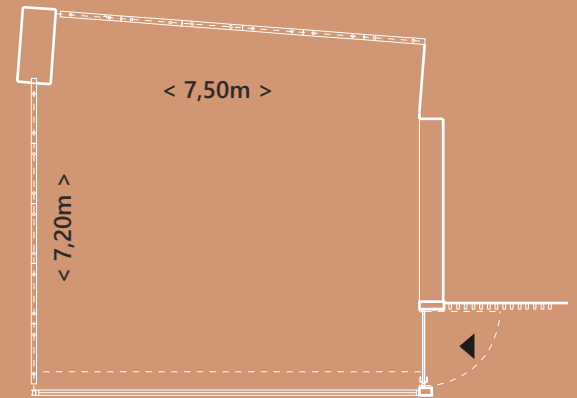
Amperes / *Amps* **16**

**Climatização e Iluminação / *Climatization and lightning system***

Ar condicionado / *Air conditioning*

Luz natural / *Natural light*

Blackout




Envidraçado / *Glass Wall*



Sala / Meeting Room


# Auditório 3


 Dimensões / Dimensions  
comp / length 7,10 m x larg / width 6,98 m

 M2 / Sqm  
52,02

 Plateia / Theater  
40

 Escola / School  
18

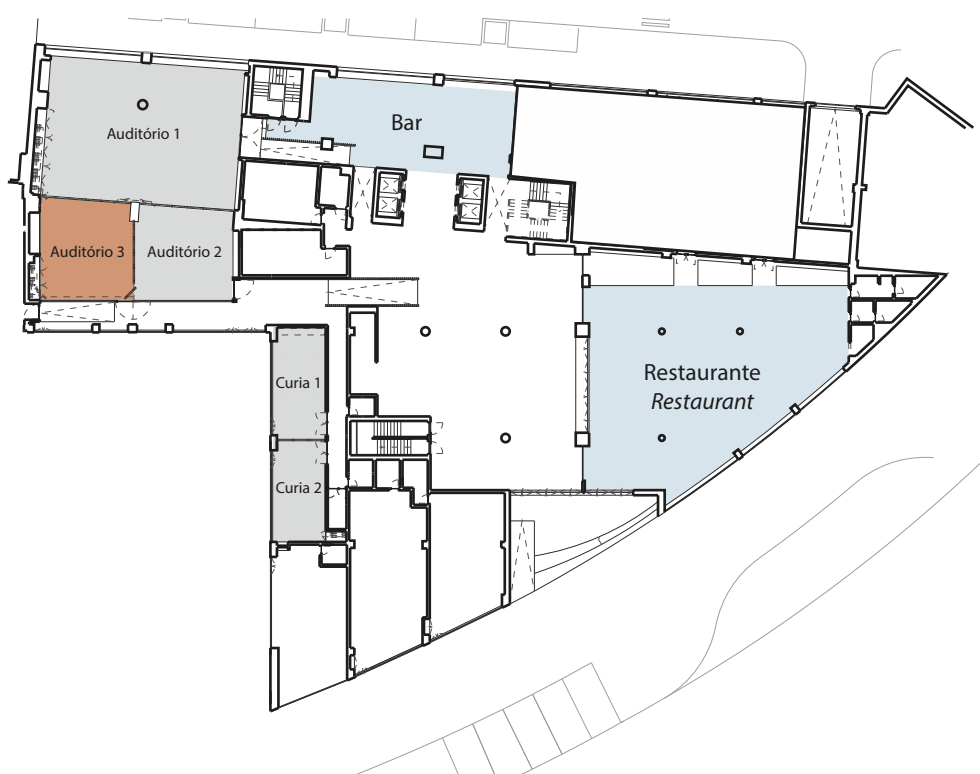
 Boardroom  
18

 Mesa U / U shape  
12

 Cabaret  
25

 Set Menu  
40

Piso / Floor 1



### Acessos / Accesses

Nº de portas / *Nº of Doors* 1

Altura da porta / *Door height* 2 m

Largura da porta / *Door width* 1,3 m

### Internet

Internet Wireless

### Ligações elétricas / *Electrical connections*

Voltagem / *Voltage* 230

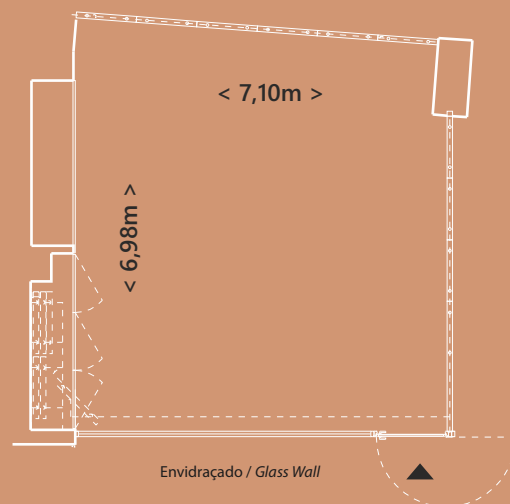
Amperes / *Amps* 16

### Climatização e Iluminação / *Climatization and lightning system*

Ar condicionado / *Air conditioning*

Luz natural / *Natural light*

Blackout




Sala / Meeting Room


# Auditório 2+3


 Dimensões / Dimensions  
comp / length 14,46 m x larg / width 7,16 m

 M2 / Sqm  
104

 Plateia / Theater  
70

 Escola / School  
57

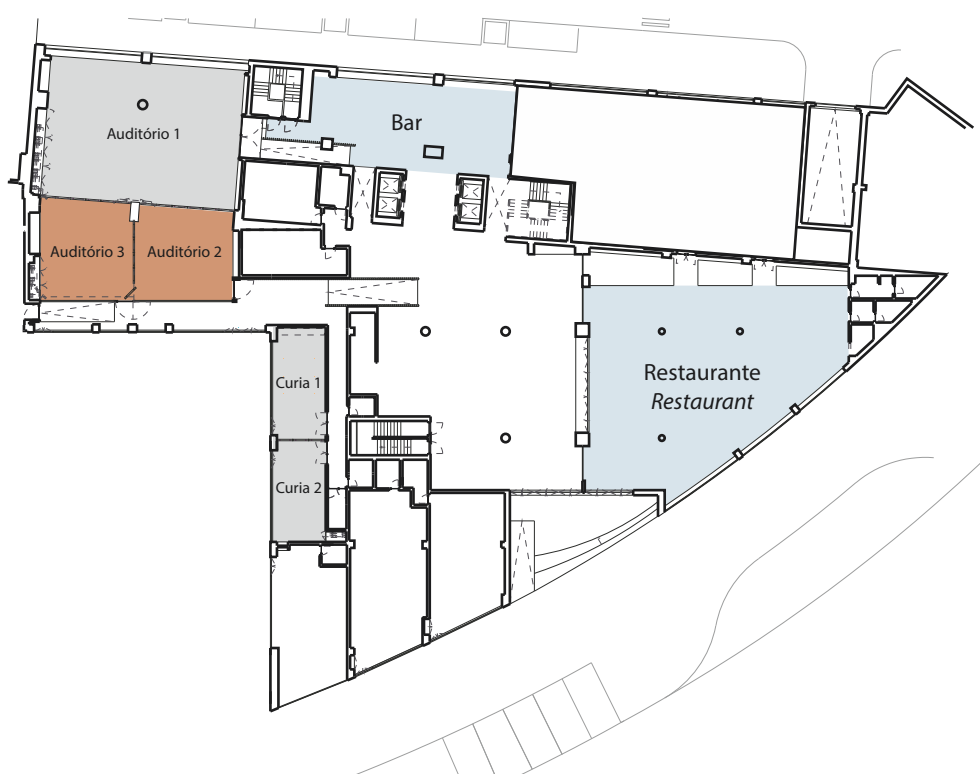
 Boardroom  
38

 Mesa U / U shape  
32

 Cabaret  
30

 Set Menu  
48

Piso / Floor 1



### Acessos / Accesses

Nº de portas / N° of Doors **2**

Altura da porta / Door height **2 m**

Largura da porta / Door width **1,4 - 1,3 m**

### Internet

Internet Wireless

### Ligações elétricas / Electrical connections

Voltagem / Voltage **230**

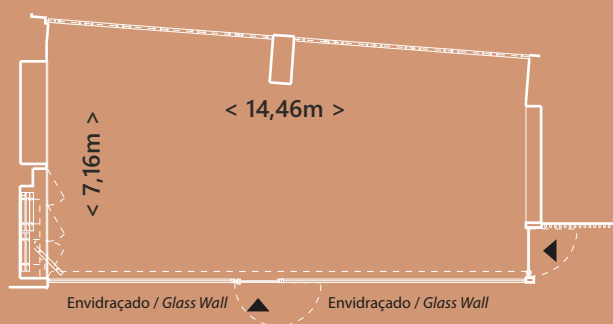
Amperes / Amps **16**

### Climatização e Iluminação / Climatization and lightning system

Ar condicionado / Air conditioning

Luz natural / Natural light

Blackout



Sala / Meeting Room


# Auditório 1+2+3


 Dimensões / Dimensions  
comp / length 17,78 m x larg / width 14,74 m


 M2 / Sqm  
264,49

 Plateia / Theater  
200

 Escola / School  
140

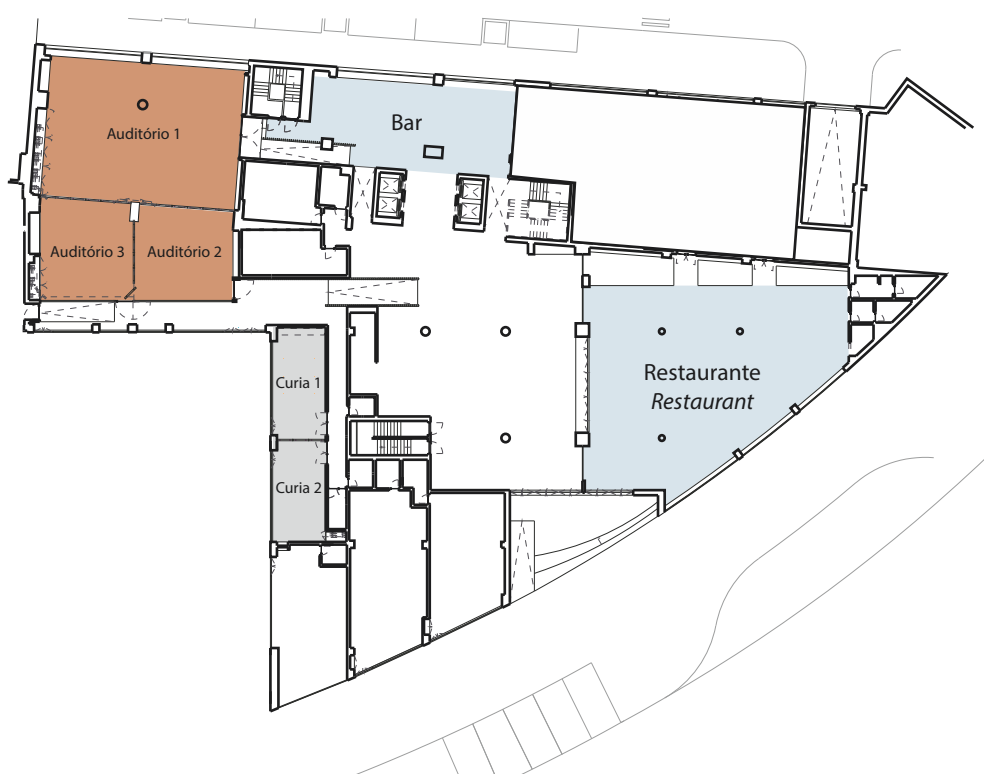
 Boardroom  
-

 Mesa U / U shape  
-

 Cabaret  
-

 Set Menu  
180

Piso / Floor 1



**Acessos / Accesses**

Nº de portas / N° of Doors **3**

Altura da porta / Door height **2 m**

Largura da porta / Door width **1,4 - 1,3 - 3,0 m**

**Internet**

Internet Wireless

**Ligações elétricas / Electrical connections**

Voltagem / Voltage **230**

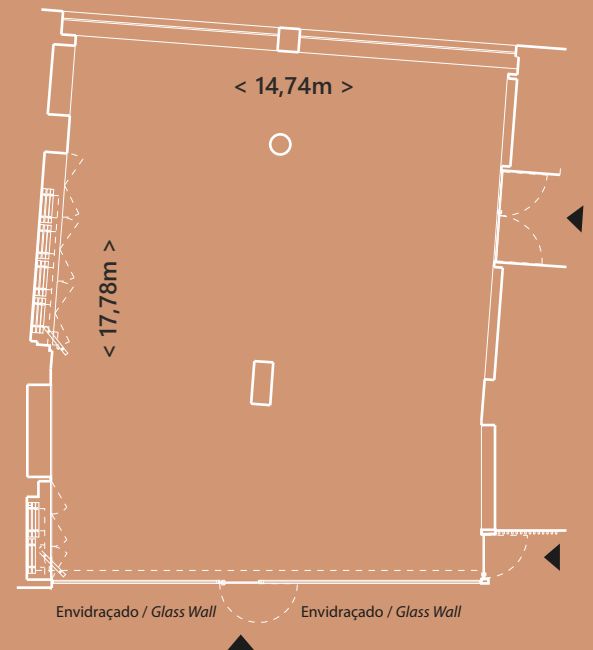
Amperes / Amps **16**

**Climatização e Iluminação / Climatization and lightning system**

Ar condicionado / Air conditioning

Luz natural / Natural light


Blackout



Sala / Meeting Room


# Cúria 1

 Dimensões / Dimensions  
comp / length 8,38 m x larg / width 3,95 m


 M2 / Sqm  
30,51


 Plateia / Theater  
24

 Escola / School  
-

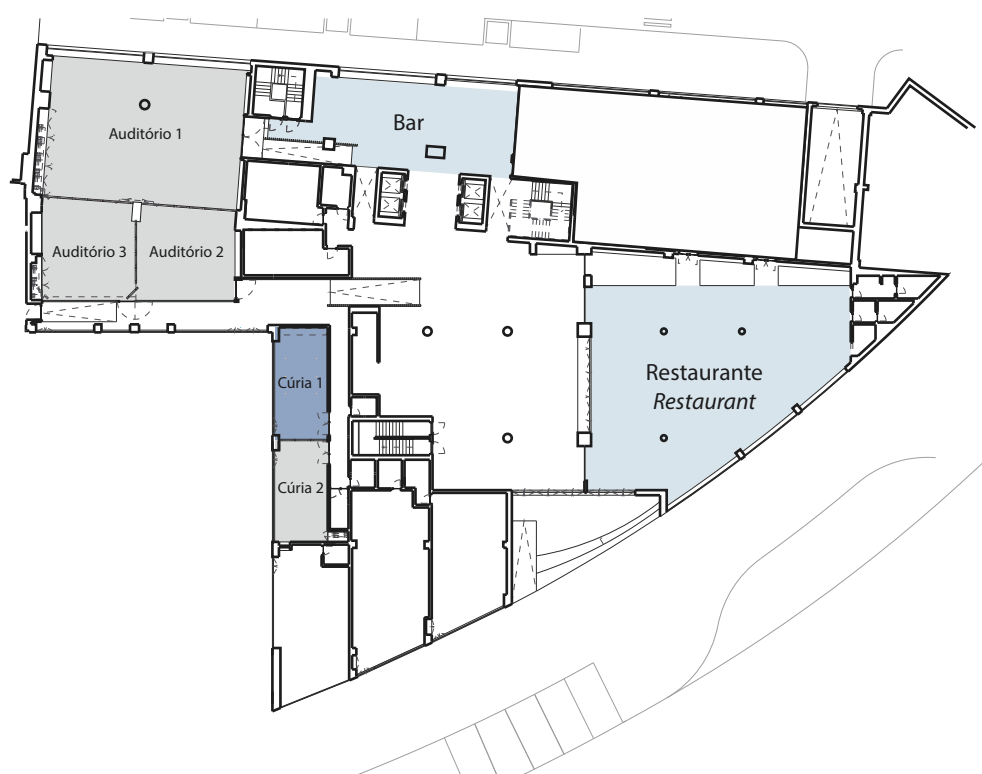
 Boardroom  
18

 Mesa U / U shape  
15

 Cabaret  
-

 Set Menu  
-

Piso / Floor 1





**Acessos / Accesses**

Nº de portas / N° of Doors **2**

Altura da porta / Door height **2 m**

Largura da porta / Door width **1,3 - 1,7 m**

**Internet**

Internet Wireless

**Ligações elétricas / Electrical connections**

Voltagem / Voltage **230**

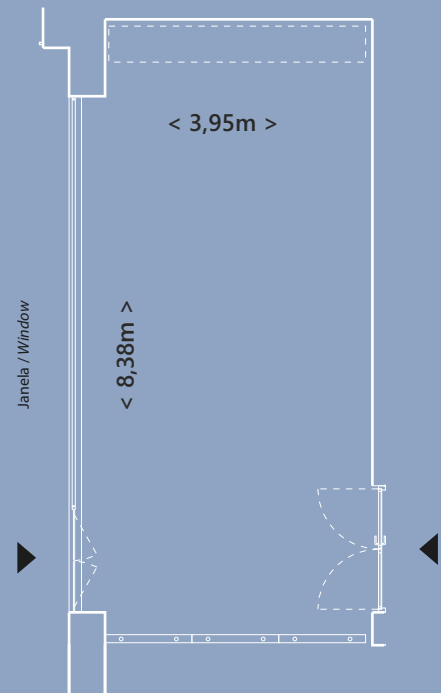
Amperes / Amps **16**

**Climatização e Iluminação / Climatization and lightning system**

Ar condicionado / Air conditioning

Luz natural / Natural light


Blackout



Sala / Meeting Room


# Cúria 2

 Dimensões / Dimensions  
comp / length 7,56 m x larg / width 3,95 m


 M2 / Sqm  
29,98


 Plateia / Theater  
24

 Escola / School  
-

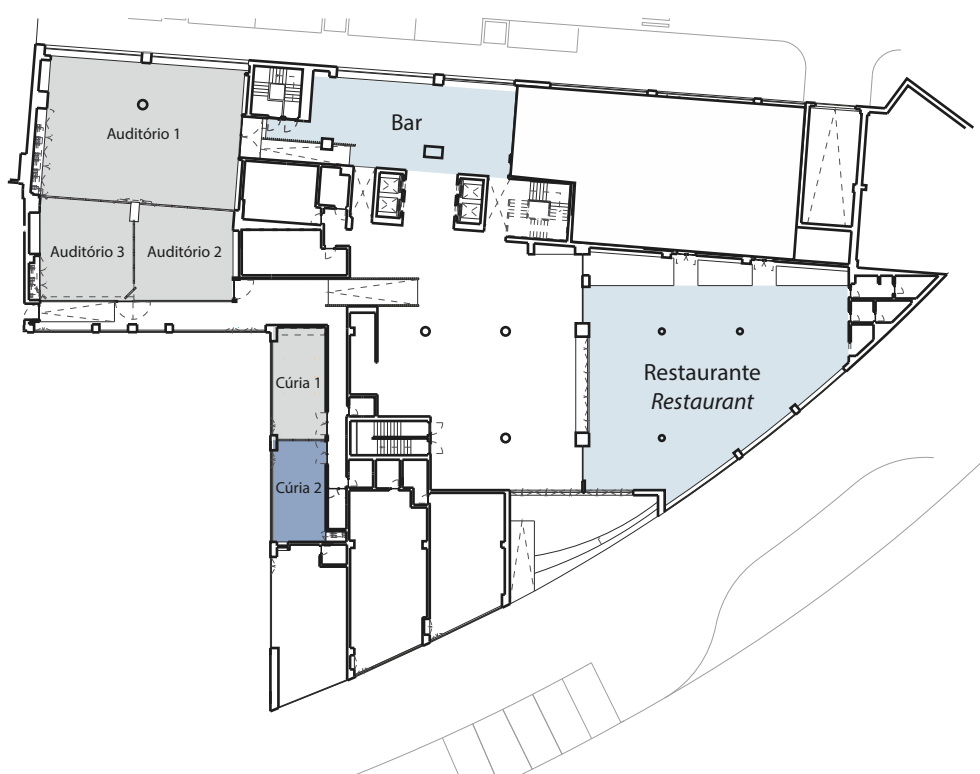
 Boardroom  
18

 Mesa U / U shape  
15

 Cabaret  
-

 Set Menu  
-

Piso / Floor 1



**Acessos / Accesses**

Nº de portas / N° of Doors **2**

Altura da porta / Door height **2 m**

Largura da porta / Door width **1,3 - 1,7 m**

**Internet**

Internet Wireless

**Ligações elétricas / Electrical connections**

Voltagem / Voltage **230**

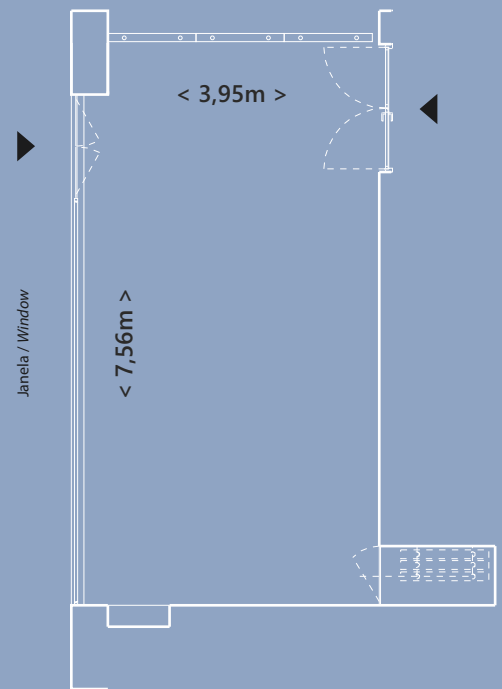
Amperes / Amps **16**

**Climatização e Iluminação / Climatization and lightning system**

Ar condicionado / Air conditioning

Luz natural / Natural light

Blackout





De forma a facilitar e realçar a sua reunião, conferência ou evento, o Lux Fátima Park oferece um total de 121 unidades de alojamento, acesso a piscina exterior, circuito de Spa e ginásio, um restaurante, terraço e estacionamento privativo.

O terraço e o restaurante poderão ser reservados em regime de exclusividade para qualquer evento social, cultural ou de teambuilding.

A nossa equipa está ao dispor para o ajudar a criar um evento bem organizado, transformador e mostrar o que a região de Fátima tem de melhor.

*To facilitate and enhance your meeting, conference or event, Lux Fátima Park offers a total of 121 accommodation units, access to an outdoor pool, spa circuit and gym, a restaurant, terrace and private parking.*

*The terrace and restaurant can be reserved exclusively for any social, cultural or team building event.*

*Our team is on hand to help you create a well-organized, transforming event and show the best of the Fatima region.*

**Instalações modernas  
que vão fazer brilhar  
o seu evento.**

*Modern facilities  
that will make  
your event shine.*



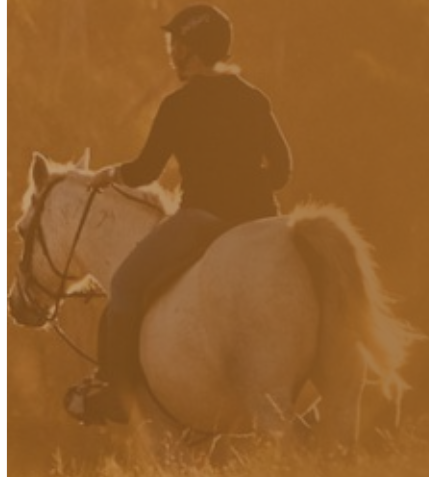


- Passeios a Cavalo
- Passeios de BTT
- Passeios Pedestres
- Todo-o-Terreno
- Aulas de Yoga
- Workshops de Nutrição
- Workshops de Mindfulness

- *Horse Rides*
- *Mountain Bike Tours*
- *Walking Tours*
- *All-terrain Rides*
- *Yoga Classes*
- *Nutrition Workshops*
- *Mindfulness Workshops*

## Sugestão de Atividades

*Suggested Activities*



## Informação e Contactos

*Information  
and Contacts*

  /luxhotels

Para mais informação, para fazer uma consulta ou pedido de reserva, por favor contacte o departamento de reservas.  
*For more information, to make an inquiry or reservation request, please contact the Reservations Department*

**reservas@luxhotels.pt**  
**+351 249 530 690**

Se necessitar de serviços de audiovisuais, decoração e entretenimento, não deixe de nos consultar.  
*If you need any audiovisual, decoration and entertainment services, do not hesitate to contact us.*

by **LUX**HOTELS